

# PGS - 3057

PORTABLE GAMMA-RAY SPECTROMETER  
(WITH OPTIONAL NEUTRON DETECTION)



EPCC / PRODUCTS / APPLICATION / SOFTWARE / ACCESSORIES / CONSUMABLES / SERVICES

**Analytical Technologies Limited**

An ISO 9001 Certified Company

[www.analyticalgroup.net](http://www.analyticalgroup.net)

## ▶▶ **Product Overview**

The ATL is a highly sensitive handheld Gamma-Ray spectrometer capable of identifying single or multiple isotopes simultaneously. The ATL also provides the user with various functions such as Search and Find, optional Neutron Detection, Nuclide ID, Dose Rates and accumulated Dose Rate.

- Large isotope library
- Lightweight with longer battery life
- RadView software for integration
- Large backlight display
- Automatic energy stabilization (no check source required)
- Easy to follow menus
- Large internal memory

## ▶▶ **Detect and identify specific radioactive isotopes in a sample**

The ATL Gamma-Ray spectrometer utilizes the highest quality Thallium doped Sodium Iodide crystal, combined with an integral high signal-to-noise ratio PMT and state-of-the-art electronics and embedded micro controller firmware. All of these enhanced features allow the ATL to be one of the most accurate portable Gamma-Ray spectrometers when it comes to identifying specific and/or multiple isotopes even with weak gamma sources. The mechanical assembly of the ATL is robust and designed for field applications where harsh environments are commonplace.

## ▶▶ **Simplified and Flexible**

The ATL operating system utilizes sensible easy to read and follow menus. The multi-position joystick and large LCD backlit display provides easy navigation through menu selections. Detailed spectral information is clearly and precisely displayed so knowledgeable users have the ability to visually identify peaks in the histogram. Various on-screen messages assist the user when immediate attention is required for issues such as preset timing, high radiation levels, alarm settings and warning messages.

## ▶▶ Remote ATL PC Spectral Analysis and Data Storage Software

The ATL is equipped with a high capacity internal memory that allows large amounts of data to be stored by record number, date and time. Stored data such as spectral and dose rate information can be easily downloaded to a PC via a mini USB or Bluetooth (optional). The downloaded data can then be displayed and managed with exclusive software. Primary features such as the selection and highlighting of Region Of Interest (R.O.I.) details and Zoom In/Out of the gamma energy histogram can be easily performed. The ATL PC software has all the necessary features that will meet the needs of virtually any user.

## ▶▶ Technical Specifications

### ▶▶ Size

- Detector Dimensions:

5.9" H(15cm) x 8" L(20cm) x 3.75" W(9.5cm)

- System weight: 3.6lbs (1.6kg)
- Detector case: Durable plastic with protective silicone sleeve

### ▶▶ Electronics

- Integral PMT with EM shielding
- High speed DSP circuitry with High SNR
- Ultra stable high voltage
- Software adjustable
- Mini USB port. Optional bluetooth
- Battery: Internal Lithium Ion rechargeable.
- Operating time: 8 hrs. Optional external battery pack

### ▶▶ Environmental

- Operating Temperature: -20°C (-40°F) to +60°C (140°F)
- Relative Humidity: 93% non-condensing at 40°C (104°F)
- Shock Resistance: Complies with ANSI N42.34
- EM Compliance: Complies with ANSI N42.34 and

CE requirements for safety RFI and EMI directives

FCC CFR47, Part 15, Subpart B, Class B compliant

## ▶▶ Display

- Backlit RGB color LCD 320x240 resolution
- Viewing area: 3.5”(8.9cm) TFT LCD

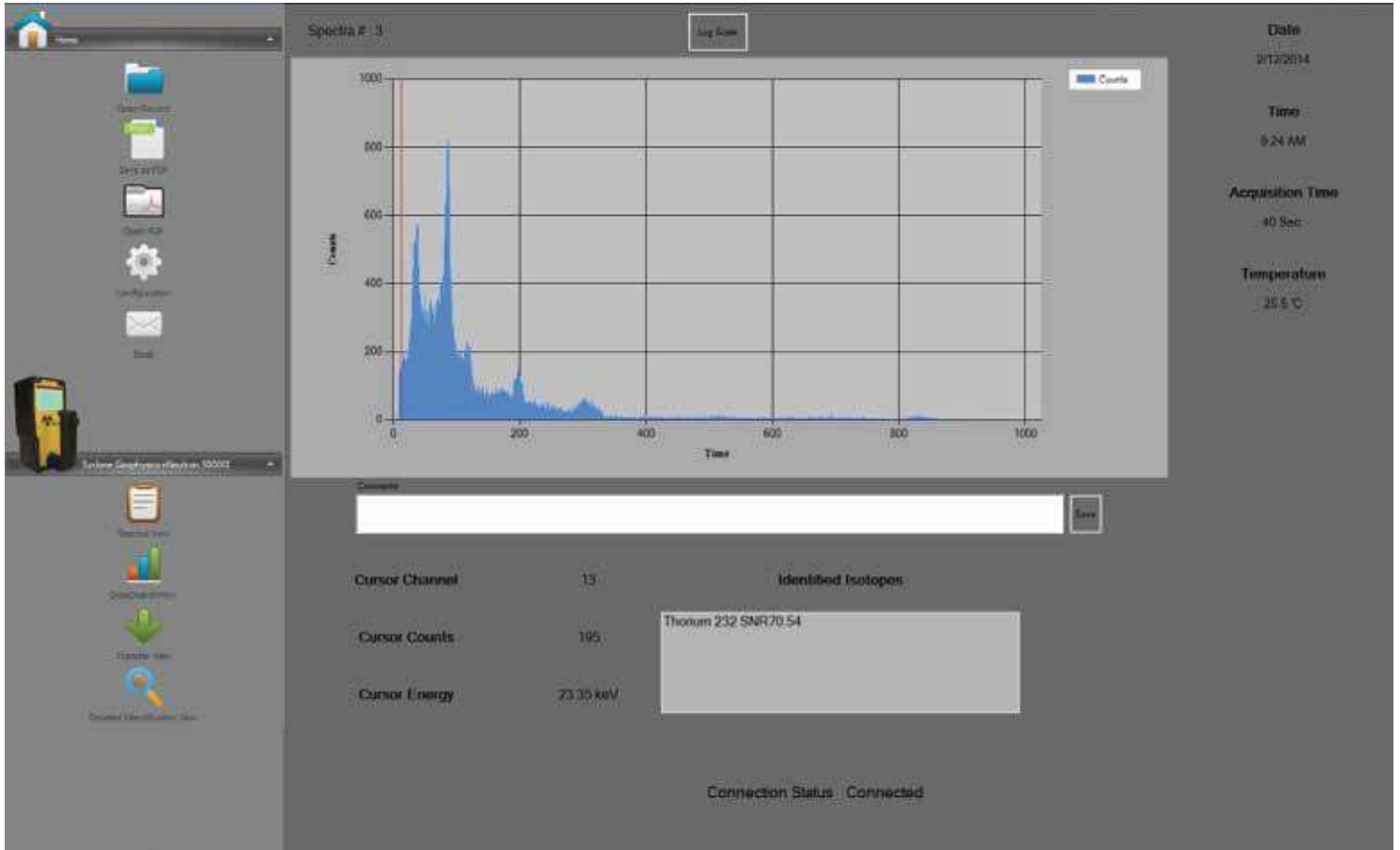
## ▶▶ Software

- Windows™ based ATL application software
- Easy to use menu driven interface
- Configurable data storage with backup
- Emailing capability with network connection
- Data storage - 100,000 Dose Rate samples/498 Spectra
- Data format complies with ANSI N42.42
- RadView software for integration

## ▶▶ Spectrometer Specifications

- Gamma NaI - Size 1.5” (38mm) x 2” (51mm)
- Geiger-Mueller, size 1.79”(45mm) x .48” (12mm)
- Energy Resolution 7.0% or better for 662 KeV
- Energy Range: 20 KeV to 3.0 MeV (Gamma)
- Optional Neutron Detector - Sensitivity - 5.1 CPS/NV
- System Calibration Software Monitor with Operator Alert
- Accumulate dose up to 5 Sv, custom increase
- Automatic stabilization via internal K-40
- Manual stabilization via 0.25 uCi Cs-137 source
- Gamma Spectrum - 1024 Channels, channel capacity 16 bits
- Correction - non-linear energy calibration
- Preset time - up to 5400 sec.

▶▶ RadView Analysis Software



## HPLC Servicing, Validation, Trainings and Preventive Maintenance :

**HPLC Servicing** :HPLC Servicing : We have team of service engineers who can attend to any make of HPLC promptly @the most affordable cost.

**Trainings** :We also take up preventive Maintenance to reduce downtime of HPLC's Trainings.

**AMC's/CMC** :AMC's/CMC :We offer user training both in-House and at customer sites on HPLC principles, operations, trouble-shooting.

**Validations** :Validations :We have protocols for carrying out periodic Validations as per GLP/GMP/USFDA norms.

**Instruments** :Instruments :We offer instruments/Renting Services Modules like pumps,detector etc. on Rent.



## About Analytical Technologies

Analytical Technologies is synonymous for offering technologies for doing analysis and is the Fastest Growing Global Brand having presence in at least 96 countries across the global. Analytical Technologies Limited is an ISO:9001 Certified Company engaged in Designing, Manufacturing, Marketing & providing Services for the Analytical, Chromatography, Spectroscopy, Bio Technology, Bio Medical, Clinical Diagnostics, Material Science & General Laboratory Instrumentation. Analytical Technologies, India has across the Country operations with at least 4 Regional Offices, 6 Branch Offices & Service Centers. Distributors & Channel partners worldwide.

## Our Products & Technologies



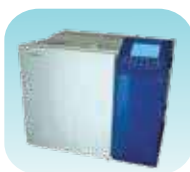
UV/VIS  
Spectro 2080+  
Double Beam



Infra FTIR



Optima Gas  
Chromatograph  
3007



Optima Gas  
Chromatograph  
2979 Plus



Flash  
Chromatograph



Atomic Absorption  
Spectrophotometer



Liquid Particle  
Counter



Optical Emission  
Spectrophotometer



DSC/TGA



Semi Auto Bio  
Chemistry Analyzer



HEMA 2062  
Hematology  
Analyzer



Micro Plate  
Reader/Washer



URINOVA 2800  
Urine Analyzer



Total Organic  
Carbon 3800



Fully Automated  
CLIA



NOVA-2100  
Chemistry Analyzer



PCR/Gradient PCR/  
RTPCR



TOC  
Analyzer



Laser Particle  
Size Analyzer



Ion Chromatograph



Water purification  
system



## Regulatory compliances



## Corporate Social Responsibility

Analytical Foundation is a nonprofit organization (NGO) found for the purpose of:



# Analytical Foundation

1. Research & Innovation Scientist's awards/QC Professional Award : Quality life is possible by innovation only and the innovation is possible by research only, hence ANALYTICAL FOUNDATION is committed to identify such personalities for their contributions across various field of Science and Technology and awarding them yearly. To participate for award, send us your details of research / testing / publication at [Info@analyticalfoundation.org](mailto:Info@analyticalfoundation.org)

2. Improving quality of life by offering YOGA Training courses, Work shops/Seminars etc.

3. ANALYTICAL FOUNDATION aims to DETOXYFY human minds,souls and body by means of yoga, Meditation, Ayurveda, Health Care, Awards, Media, Events, Camps etc.



**HPLC Solutions   MultipleLabs   Analytical Bio-Med   Analytical Distributors   Analytical Foundation (Trust)**

**Corporate & Regd. Office:**  
Analytical House, # E67 & E68,  
Ravi Park, Vasna Road, Baroda,  
Gujarat 390 015. INDIA

T: +91 265 2253620  
+91 265 2252839  
+91 265 2252370  
F: +91 265 2254395

E: [info@hplctechnologies.com](mailto:info@hplctechnologies.com)  
[info@multiplelabs.com](mailto:info@multiplelabs.com)  
[info@analyticalgroup.net](mailto:info@analyticalgroup.net)

W. [www.analyticalgroup.net](http://www.analyticalgroup.net)  
[www.hplctechnologies.com](http://www.hplctechnologies.com)  
[www.multiplelabs.com](http://www.multiplelabs.com)

Sales & Support Offices:  
across the country :  
Distributors & Channel  
partners World Wide